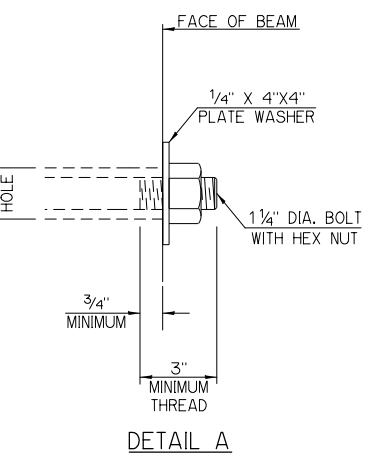
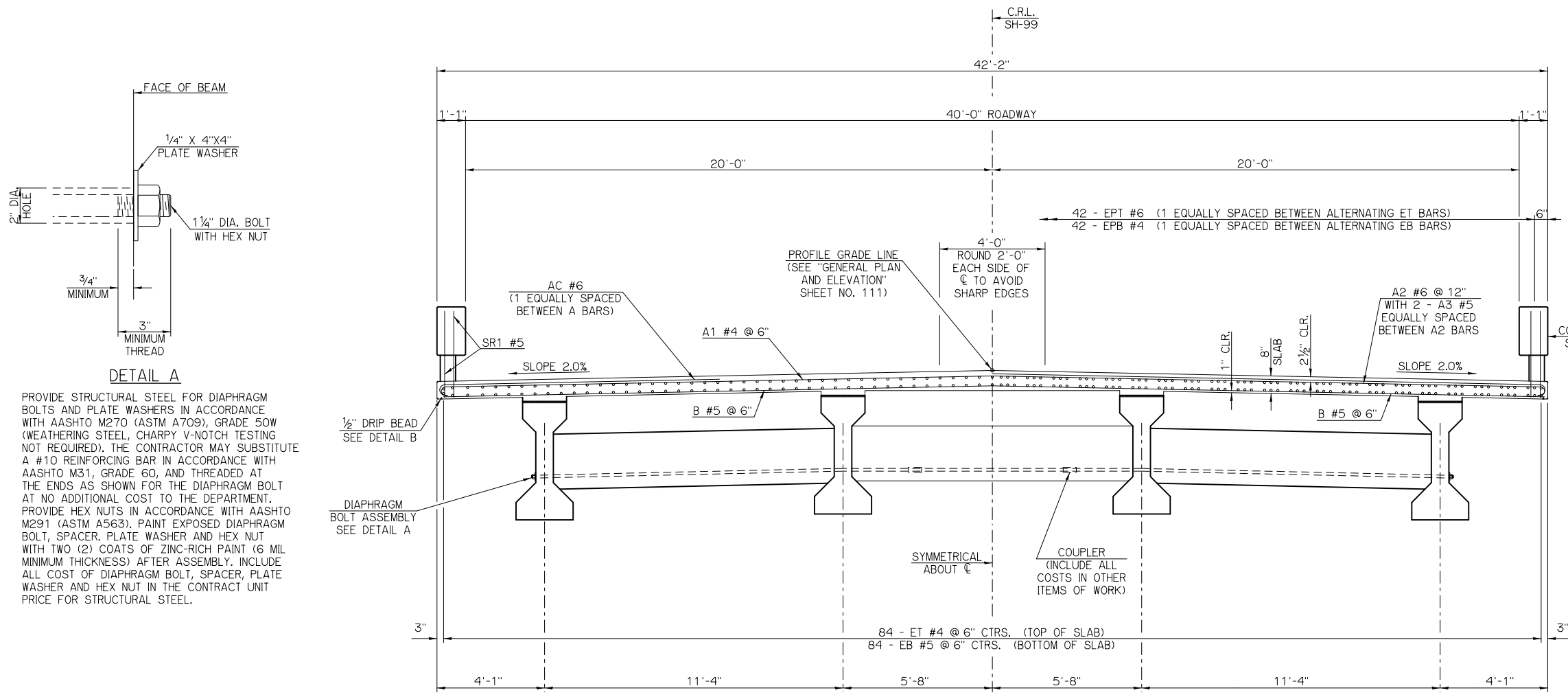
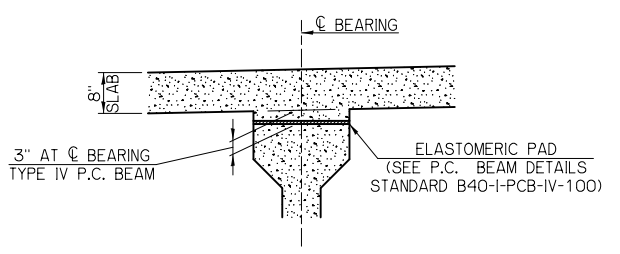
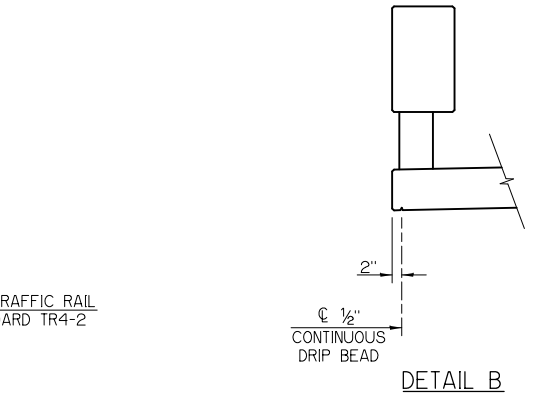


REV. NO.	DESCRIPTION	REVISIONS	DATE



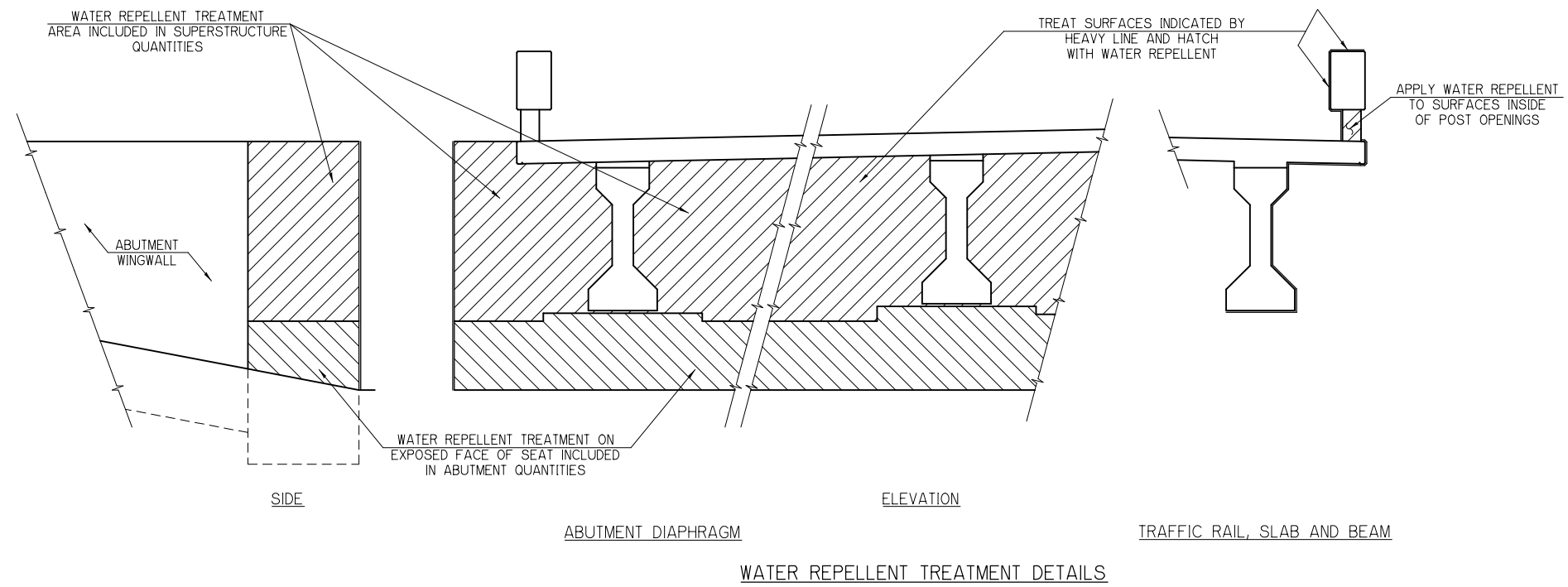
PROVIDE STRUCTURAL STEEL FOR DIAPHRAGM BOLTS AND PLATE WASHERS IN ACCORDANCE WITH AASHTO M270 (ASTM A709), GRADE 50W (WEATHERING STEEL, CHARPY V-NOTCH TESTING NOT REQUIRED). THE CONTRACTOR MAY SUBSTITUTE A #10 REINFORCING BAR IN ACCORDANCE WITH AASHTO M31, GRADE 60, AND THREADED AT THE ENDS AS SHOWN FOR THE DIAPHRAGM BOLT AT NO ADDITIONAL COST TO THE DEPARTMENT. PROVIDE HEX NUTS IN ACCORDANCE WITH AASHTO M291 (ASTM A563). PAINT EXPOSED DIAPHRAGM BOLT, SPACER, PLATE WASHER AND HEX NUT WITH TWO (2) COATS OF ZINC-RICH PAINT (6 MIL MINIMUM THICKNESS) AFTER ASSEMBLY. INCLUDE ALL COST OF DIAPHRAGM BOLT, SPACER, PLATE WASHER AND HEX NUT IN THE CONTRACT UNIT PRICE FOR STRUCTURAL STEEL.



PLAN QUANTITIES FOR CLASS AA CONCRETE INCLUDE 18.6 C.Y. CONCRETE FOR BEAM HAUNCHES. THE HAUNCH HEIGHT SHOWN IS THE THEORETICAL HAUNCH HEIGHT AT THE CENTERLINE BEARING ONLY, MEASURED FROM THE BOTTOM OF THE DECK SLAB TO THE TOP OF THE BEAM, AND VARIES ACROSS THE SPAN. DETERMINE THE ACTUAL HAUNCH HEIGHT (ACCOUNTING FOR BEAM CAMBER, DEAD LOAD DEFLECTION AND ROADWAY GRADE) AFTER ERECTION OF THE BEAMS AND SUBMIT TO THE ENGINEER FOR APPROVAL. THE ENGINEER WILL NOT MEASURE DIFFERENCES BETWEEN THE THEORETICAL AND THE ACTUAL HAUNCH HEIGHTS FOR PAYMENT.

HALF SECTION AT INTERMEDIATE DIAPHRAGM HALF SECTION AT PIER DIAPHRAGM

TYPICAL CROSS SECTION



SUMMARY OF SUPERSTRUCTURE QUANTITIES		
DESCRIPTION	UNIT	TOTAL
PRESTRESSED CONCRETE BEAMS (TYPE IV)	LF	877.0
SAW-CUT GROOVING	SY	989.0
CONCRETE RAIL (TR-4)	LF	441.0
STRUCTURAL STEEL	LB	1,050.0
CLASS AA CONCRETE	CY	298.0
WEATHERING STEEL FIXED BEARING ASSEMBLY	EA	8.0
STAINLESS STEEL EXPANSION BEARING ASSEMBLY	EA	16.0
ELASTOMERIC BEARING PADS	EA	16.0
EPOXY COATED REINFORCING STEEL	LB	95,340.0
WATER REPELLENT (VISUALLY INSPECTED)	SY	818.0
SEALER CRACK PREPARATION	LF	163.0
SEALER RESIN	GAL	1.8

SH-99 OVER BIRCH CREEK OSAGE COUNTY

TYPICAL CROSS SECTION BRIDGE "C"

NO. 5730 1228X NBI 30315

STATE OF OKLAHOMA DEPARTMENT OF TRANSPORTATION

JOB PIECE NO. 24261(04) SHEET NO. 118

Design	RTN	7/12
Detail	RTN	7/12
Check	SBH	7/12
Squad	
Eng.	

Date: 6/7/2017 4:52:47 PM
 FILE: I:\2010\10K11 Birch S&T Rock Creek\001 - Birch Creek\Final PSE Submittal 6-7-17*118-Typical Cross Section Bridge C.dgn
 Plotted By: rdm